

# Assessor & Mentor Guidesheet

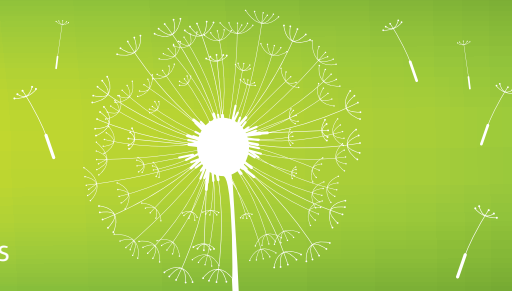


**QQI**

Quality and Qualifications Ireland  
Dearbhú Cáilíochta agus Cáilíochtaí Éireann

## Awards Standards

National Framework of Qualifications – Grid of Level Indicators



Candidate Name:

Programme:

Institute:

	Level 6	Level 7	Level 8	Level 9	Level 10	Assessor & Mentor Notes
<b>Knowledge - Breadth</b>	Specialised knowledge of a broad area	Specialised knowledge across a variety of areas	An understanding of the theory, concepts and methods pertaining to a field (or fields) of learning	A systematic understanding of knowledge, at, or informed by, the forefront of a field of learning	A systematic acquisition and understanding of a substantial body of knowledge which is at the forefront of a field of learning	
<b>Knowledge - Kind</b>	Some theoretical concepts and abstract thinking, with significant underpinning theory	Recognition of limitations of current knowledge and familiarity with sources of new knowledge; integration of concepts across a variety of areas	Detailed knowledge and understanding in one or more specialised areas, some of it at the current boundaries of the field(s)	A critical awareness of current problems and/or new insights, generally informed by the forefront of a field of learning	The creation and interpretation of new knowledge, through original research, or other advanced scholarship, of a quality to satisfy review by peers	
<b>Know-how and Skill - Range</b>	Demonstrate comprehensive range of specialised skills and tools	Demonstrate specialised technical, creative or conceptual skills and tools across an area of study	Demonstrate mastery of a complex and specialised area of skills and tools; use and modify advanced skills and tools to conduct closely guided research, professional or advanced technical activity	Demonstrate a range of standard and specialised research or equivalent tools and techniques of enquiry	Demonstrate a significant range of the principal skills, techniques, tools, practices and/or materials which are associated with a field of learning; develop new skills, techniques, tools, practices and/or materials	
<b>Know-how and Skill - Selectivity</b>	Formulate responses to well-defined abstract problems	Exercise appropriate judgement in planning, design, technical and/or supervisory functions related to products, services, operations or processes	Exercise appropriate judgement in a number of complex planning, design, technical and/or management functions related to products, services, operations or processes, including resourcing	Select from complex and advanced skills across a field of learning; develop new skills to a high level, including novel and emerging techniques	Respond to abstract problems that expand and redefine existing procedural knowledge	
<b>Competence - Context</b>	Act in a range of varied and specific contexts involving creative and non-routine activities; transfer and apply theoretical concepts and/or technical or creative skills to a range of contexts	Utilise diagnostic and creative skills in a range of functions in a wide variety of contexts	Display mastery Use advanced skills to conduct research, or advanced technical or professional activity, accepting accountability for all related decision making; transfer and apply diagnostic and creative skills in a range of contexts	Act in a wide and often unpredictable variety of professional levels and ill defined contexts	Exercise personal responsibility and largely autonomous initiative in complex and unpredictable situations, in professional or equivalent contexts	
<b>Competence - Role</b>	Exercise substantial personal autonomy and often take responsibility for the work of others and/or for the allocation of resources; form, and function within, multiple, complex and heterogeneous groups	Accept accountability for determining and achieving personal and/or group outcomes; take significant or supervisory responsibility for the work of others in defined areas of work	Act effectively under guidance in a peer relationship with qualified practitioners; lead multiple, complex and heterogeneous groups	Take significant responsibility for the work of individuals and groups; lead and initiate activity	Communicate results of research and innovation to peers; engage in critical dialogue; lead and originate complex social processes	
<b>Competence - Learning to Learn</b>	Learn to evaluate own learning and identify needs within a structured learning environment; assist others in identifying learning needs	Take initiative to identify and address learning needs and interact effectively in a learning group	Learn to act in variable and unfamiliar learning contexts; learn to manage learning tasks independently, professionally and ethically	Learn to self-evaluate and take responsibility for continuing academic/professional development	Learn to critique the broader implications of applying knowledge to particular contexts	
<b>Competence - Insight</b>	Express an internalised, personal world view, reflecting engagement with others	Express an internalised, personal world view, manifesting solidarity with others	Express a comprehensive, internalised, personal world view manifesting solidarity with others	Scrutinise and reflect on social norms and relationships and act to change them	Scrutinise and reflect on social norms and relationships and lead action to change them	



Ollscoil  
Teicneolaíochta  
an Atlantaigh

Atlantic  
Technological  
University